

DE

Technische Unterlagen

Ökodesignverordnung

EN

Technical Documents

Ecodesign Regulation



SG 120 A

20070



1

DE

Materialliste

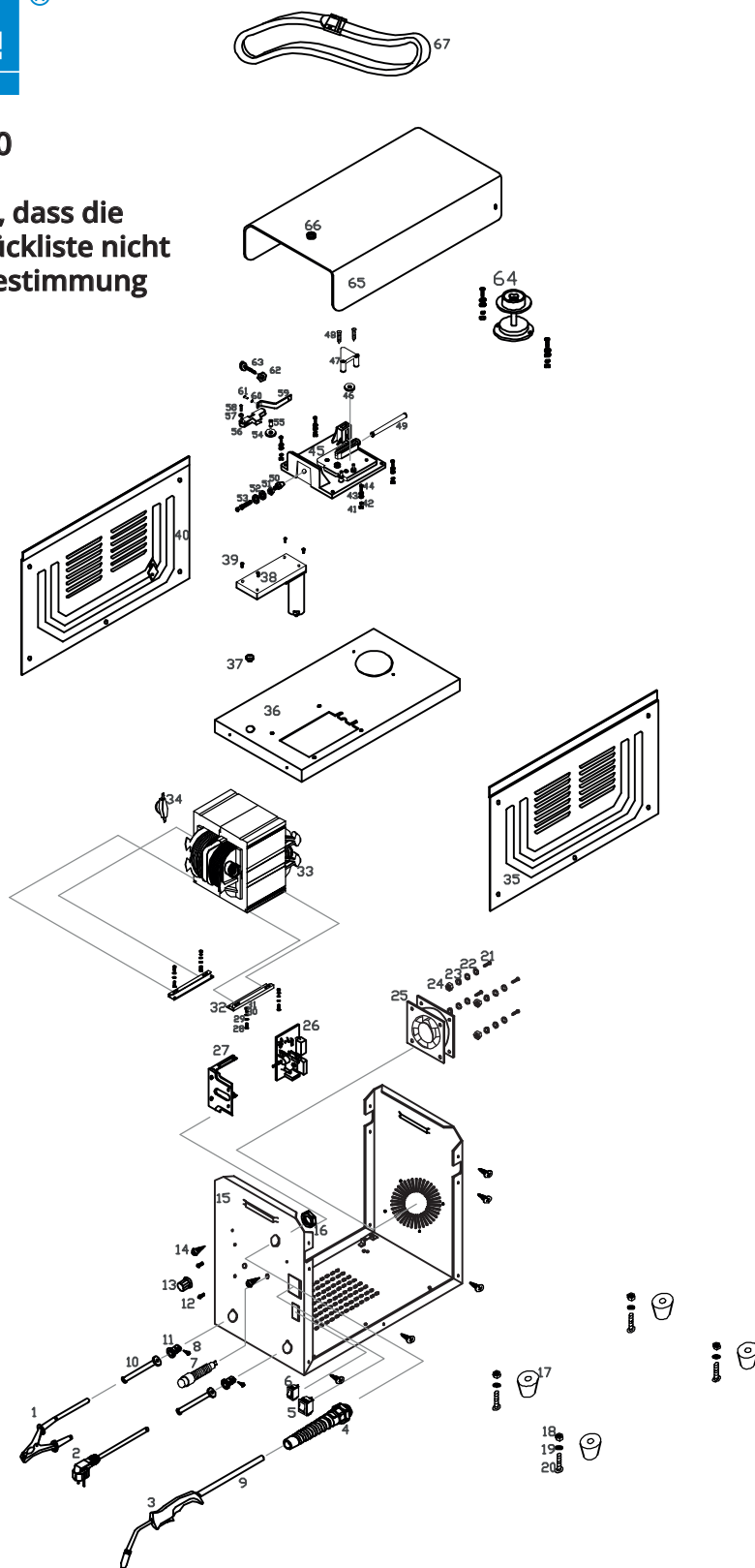
EN

Bill of materials

Güde®

SG 120 A # 20070

Bitte beachten Sie, dass die Zeichnung und Stückliste nicht für die Ersatzteilbestimmung angedacht sind.



Fülldraht-Schweissgerät SG 120 A

No.	SG 120 A # 20070	Material	Material name	Quantity	Weight
1	earth clamp	KDC-1200	PE	1	80g
2	power cable	H07RN-F 3G1.5mm ² DY05 250V 16A	PVC	1	507g
3	MIG torch	KDH-8200 200@35%	PA66	1	928g
4	anti-haul	PG19	PA6	1	20g
5	power switch	KCD-25 AC 250V 50/60Hz 25A	PA66	1	17g
6	shelves switch	KCD-405 16A 250V	PA66	1	7g
7	Over-heat indicator light	AD-16Y-10AC 230V	PC	1	7g
8	screw	3×12mm slef tapping round head	steel	1	1g
9	welding cable	H01N2-D 1×10mm ²	CPE	1	286g
10	cable jacket	/	PVC	3	6g
11	anti-haul		PA6	2	10g
12	screw	4×10mm slef tapping	steel	4	3g
13	knob		PA6	1	7g
14	screw	4×10mm slef tapping	steel	16	19g
15	bottom	Q215 δ=1.0mm	steel	1	1317g
16	screw	/	PA6	1	2g
17	foot	/	PVC	4	37g
18	nut	M5mm	steel	4	3g
19	flat washer	φ5mm	steel	4	2g
20	screw	5×12mm	steel	4	8g
21	screw	4×16mm	steel	4	5g
22	flat washer	φ4mm	steel	8	1g
23	spring washer	φ4mm	steel	4	1g
24	nut	M4mm	steel	4	2g
25	fan	KDF-120 230V	alu	1	480g
26	PCB		PA6	1	331g
27	bracket for PCB	/	FY-4	1	13g
28	bolt	5×20mm hex bolt	steel	4	13g
29	flat washer	φ5mm	steel	8	5g
30	spring washer	φ5mm	steel	4	2g
31	nut	M5mm	steel	4	4g
32	bracket for	45 #	steel	2	130g
33	main transformer		DMC	1	384g
34	thermal protection	KDS-32A AC 400V 50Hz 128±5°C	PBT	1	16g
35	right-side panel	Q215 δ=1.0mm	steel	1	533g
36	middle board	Q215 δ=1.0mm	steel	1	470g
37	rubber circle	M12mm	CPE	1	2g
38	wire-feeding motor	KD241 (24V 0.4A DC)	steel	1	489g
39	screw	4×10mm flat head	steel	4	3g
40	left-side panel	Q215 δ=1.0mm	steel	1	555g
41	nut	M4mm	steel	4	29g
42	spring washer	φ4mm	steel	4	1g

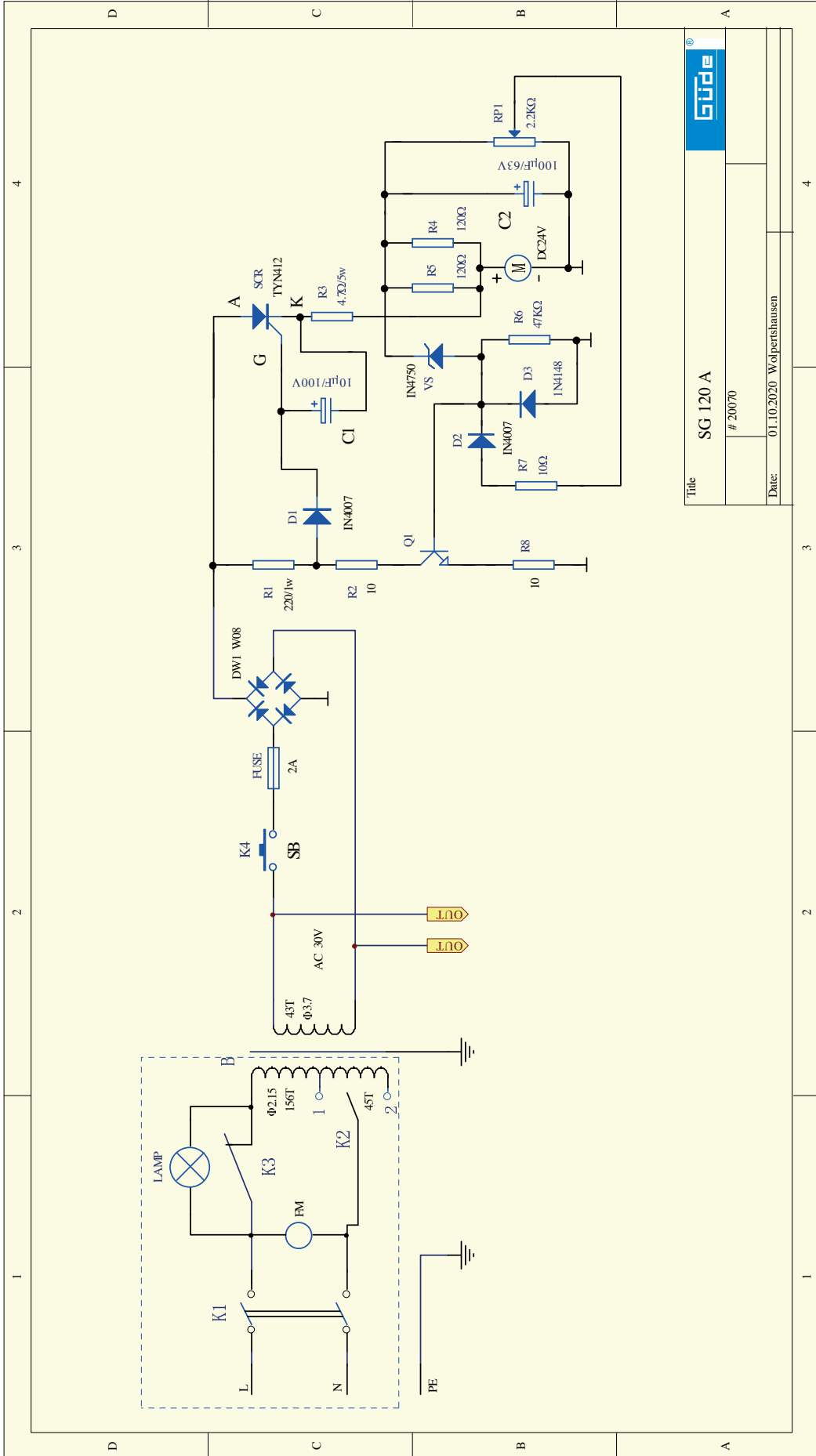
No.	SG 120 A # 20070	Material	Material name	Quantity	Weight
43	flat washer	φ4mm	steel	8	1g
44	screw	4×10mm round head	steel	4	7g
45	bracket for motor	PA66	PA66	1	92g
46	wire-feeding roller	0.8/0.9mm	steel	1	22g
47		PA66	PA66	1	18g
48	screw	M4×16mm	steel	2	2g
49	wire-feeding pipe	φ4mm	PA6	1	1g
50	thread	copper	copper	1	4g
51	screw	M12mm	copper	2	2g
52	washer	φ12mm	copper	2	8g
53	bolt	copper	copper	1	25g
54	wire pressure wheel		steel	1	19g
55	axel	φ9mm	steel	1	6g
56	shaft seat	PA66	PA66	1	7g
57	flat washer	3×10mm	steel	1	0.5g
58	screw	3×20mm round heand	steel	3	8g
59	snap gauge		steel	1	1g
60	flat washer	φ4mm	steel	14	1g
61	nut	M6mm	steel	1	2g
62	screw	6×20mm	PA6	1	6g
63	wire spool holder	/	PA6	1	80g
64	cover	Q215 δ=1.0mm	steel	1	68g
65	locknut		PP	1	5g
66	belt		PP	1	33g

2

DE
EN

Schaltplan

Circuit diagram



GÜDE GmbH & Co. KG
Birkichstrasse 6
74549 Wolpertshausen
Deutschland
Tel.: +49-(0)7904/700-0
Fax.: +49-(0)7904/700-250
eMail: info@guede.com

